

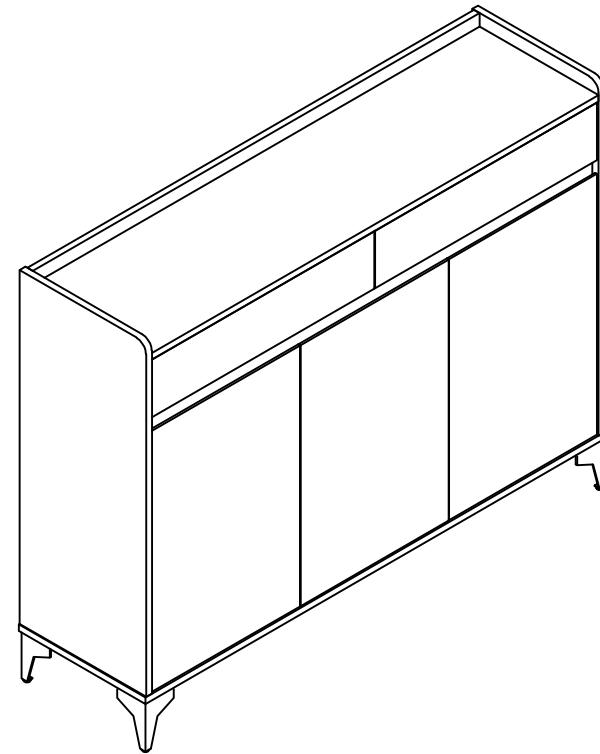
## Assemble instructions

Congratulations!

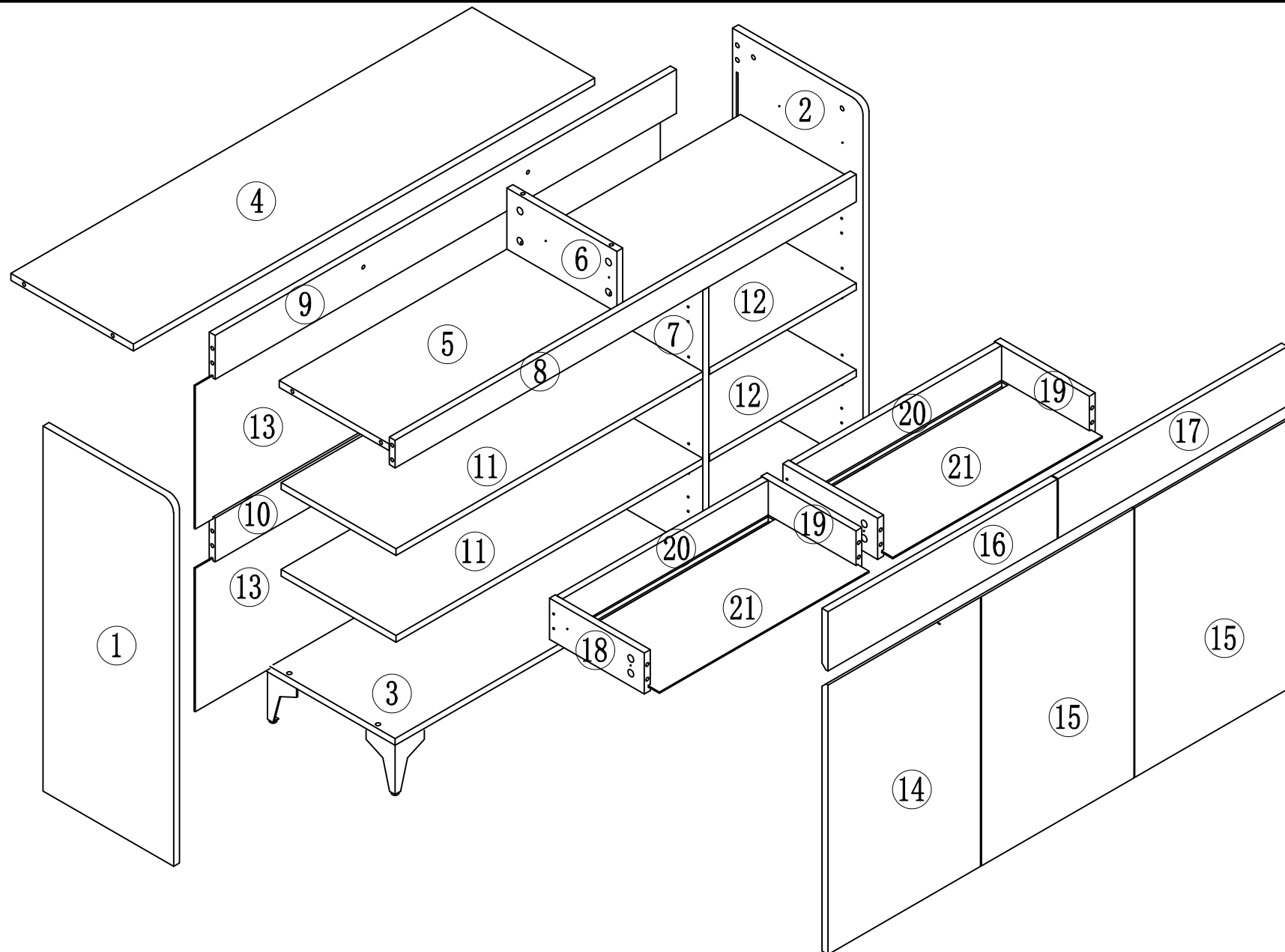
You have just bought a new shoe cabinet. Follow these few advices for an optimal use:

- Kindly follow the mounting steps suggested in this manual for easy assembling
- Please read carefully and keep this document for further use.
- For cleaning, we recommend you to use a damp cloth or chamois with a suitable product cleaner.
- Do not use any abrasive or powder based cleaning products as it may damage the surface of your shoe cabinet.




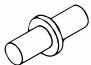
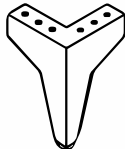

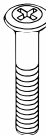
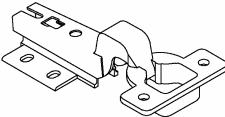
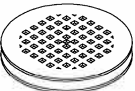
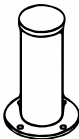


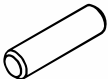

Assembly Time around 90 minutes.



# Assemble instructions- Spare parts

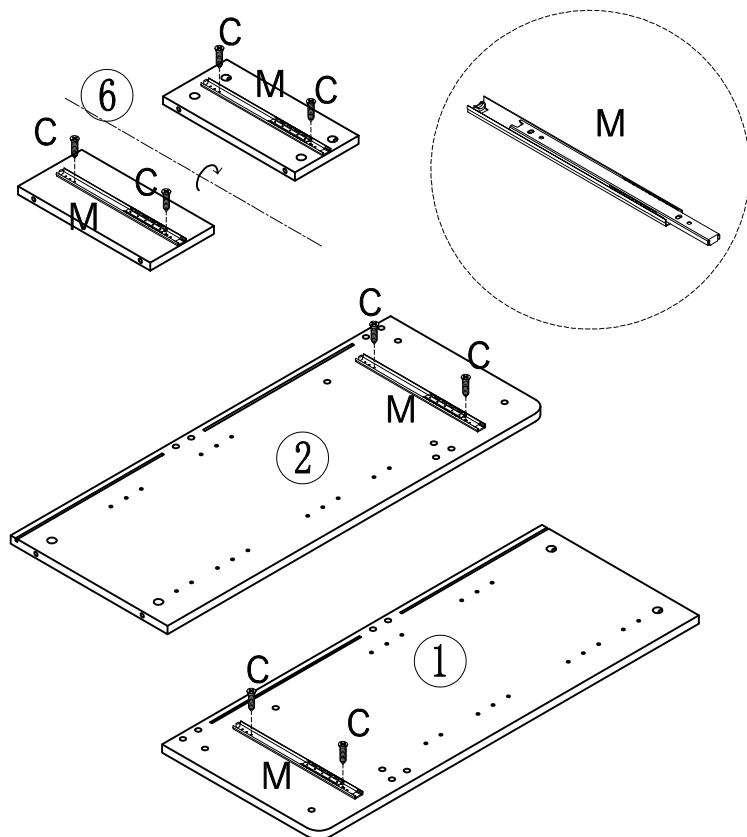


# Assemble instructions- Spare parts

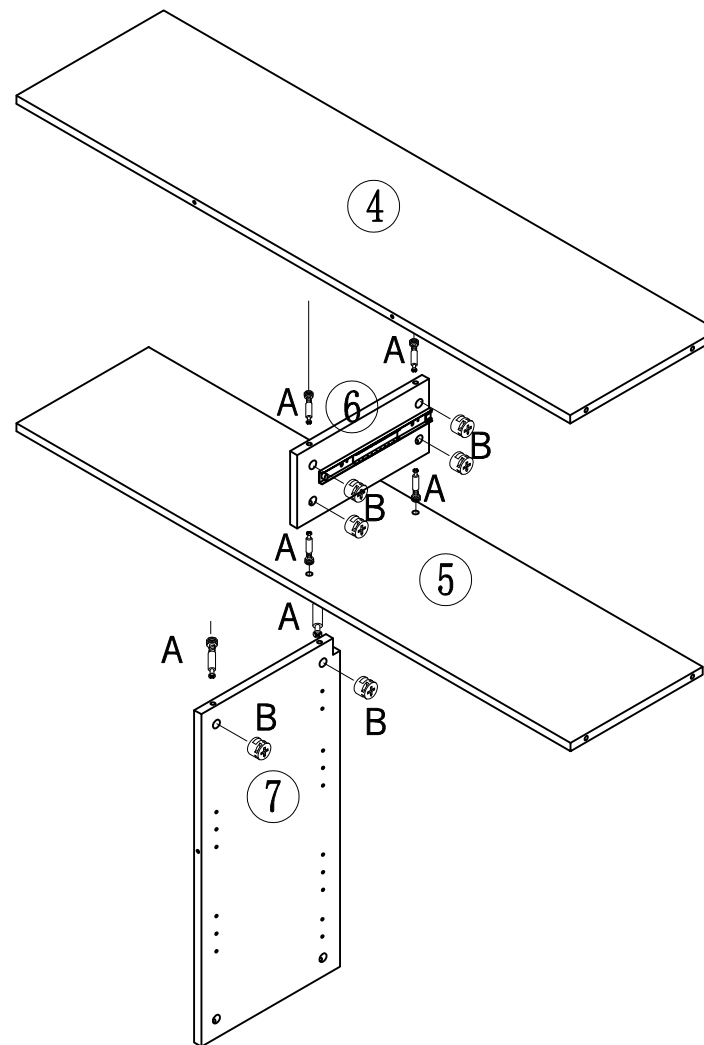
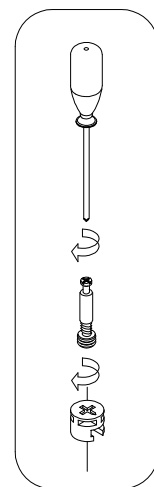
						 M4x14											
A	x	40	B	x	40	C	x	80	D	x	16	E	x	4	F	x	8
 M7x38												 12"			 M4x35		
G	x	2	H	x	6	K	x	2	L	x	1	M	x	4	N	x	8
 Ø6x30																	
O	x	2	P	x	1												

# Assemble instructions- Spare parts

1



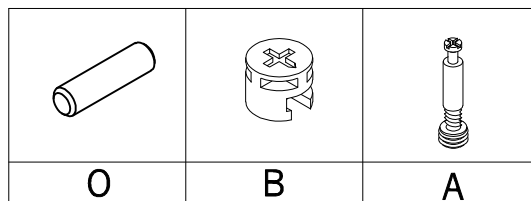
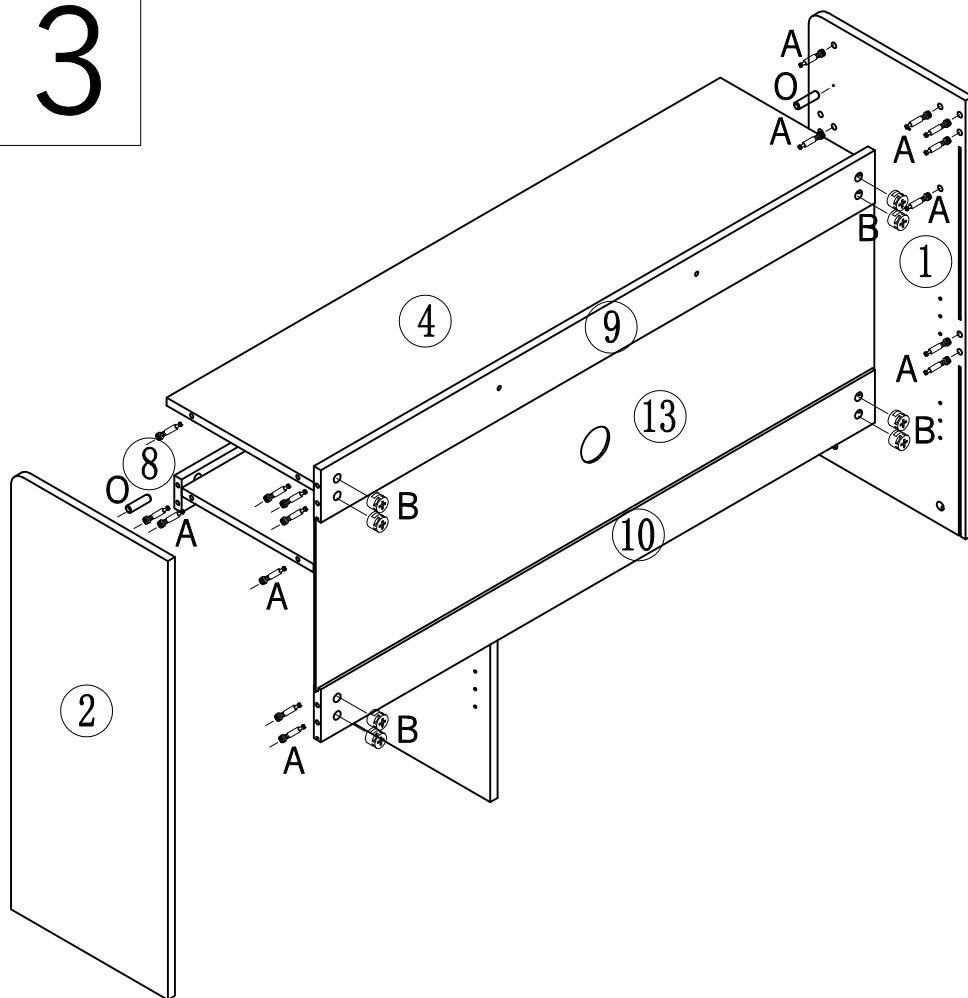
2



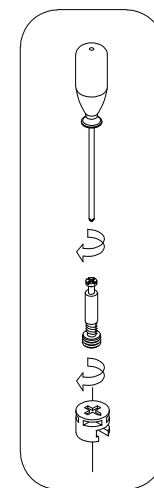
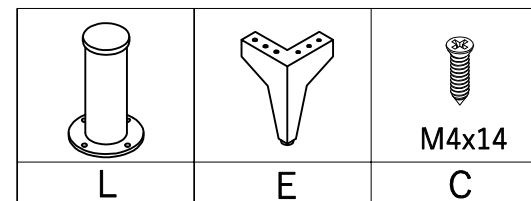
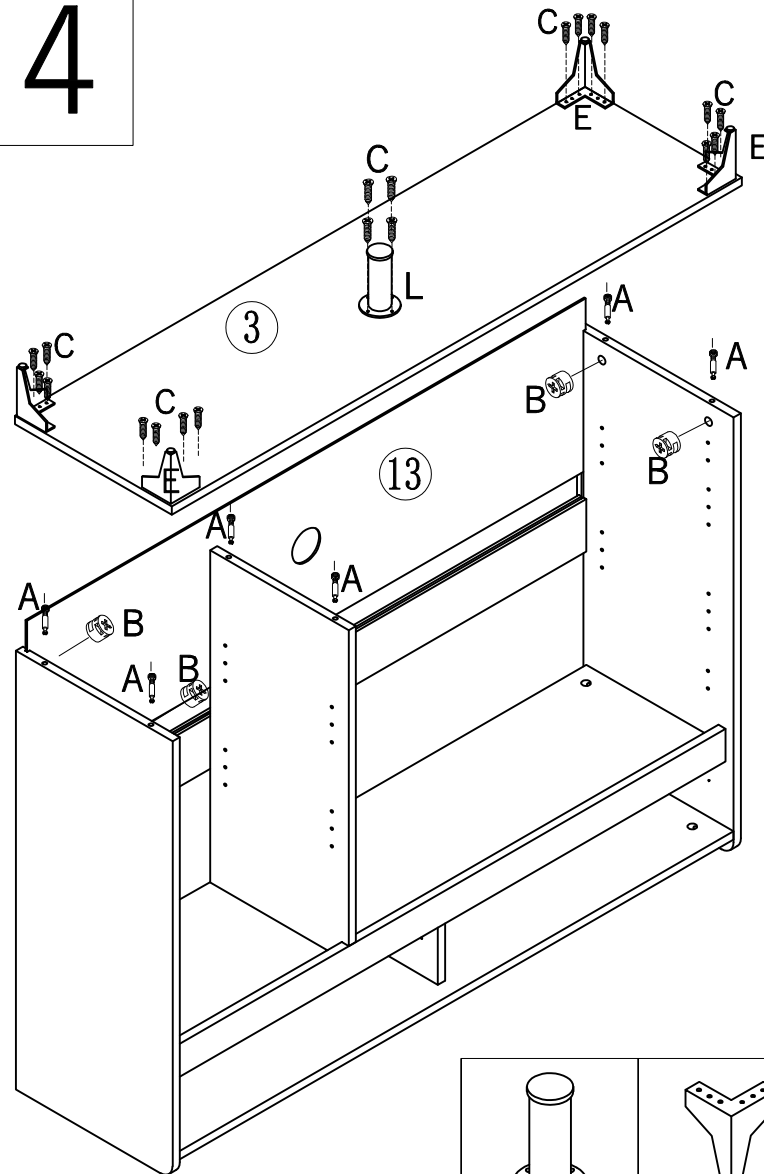
M	M4x14 C	B	A

# Assemble instructions- Spare parts

3

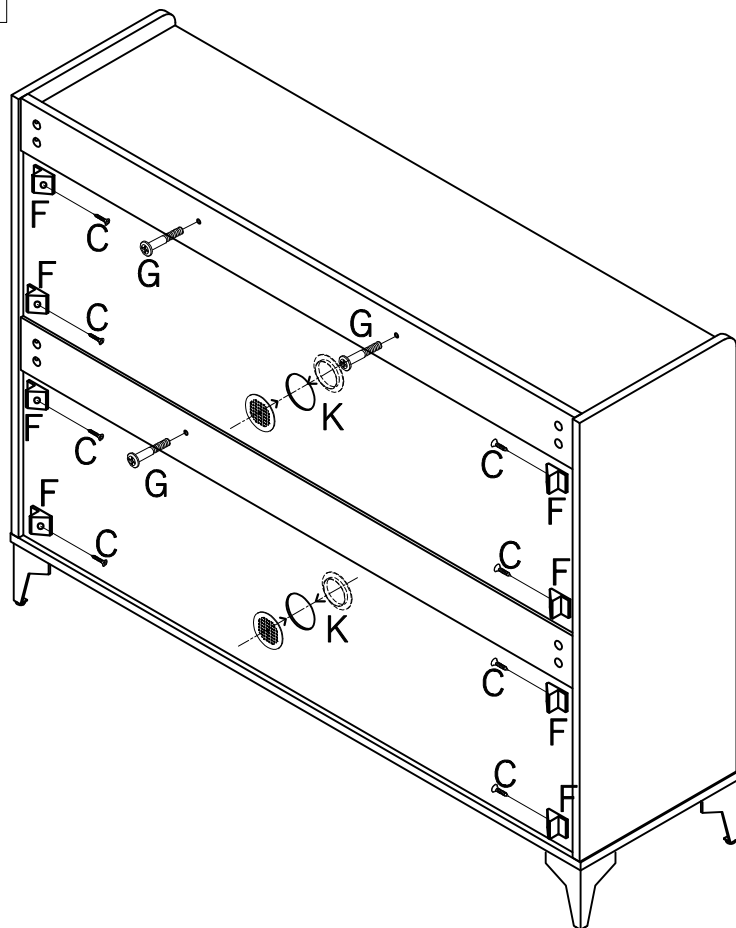


4

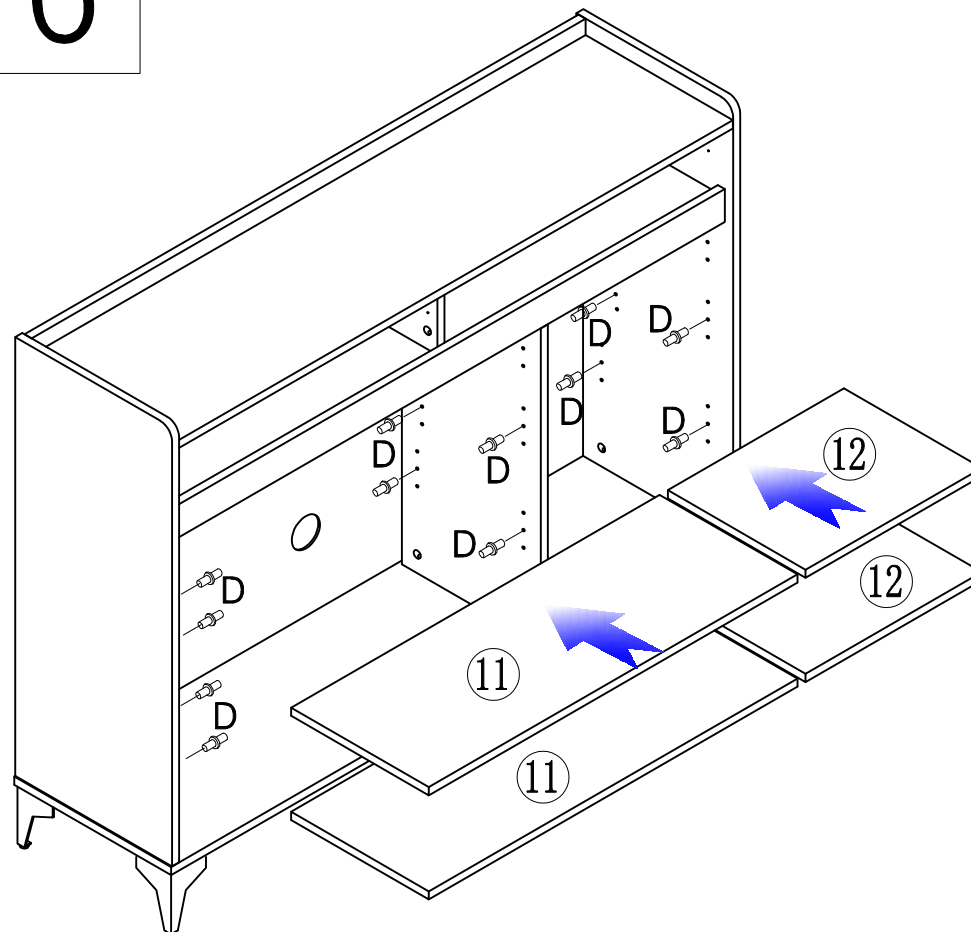


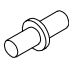
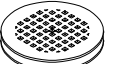

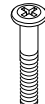

# Assemble instructions- Spare parts

5



6

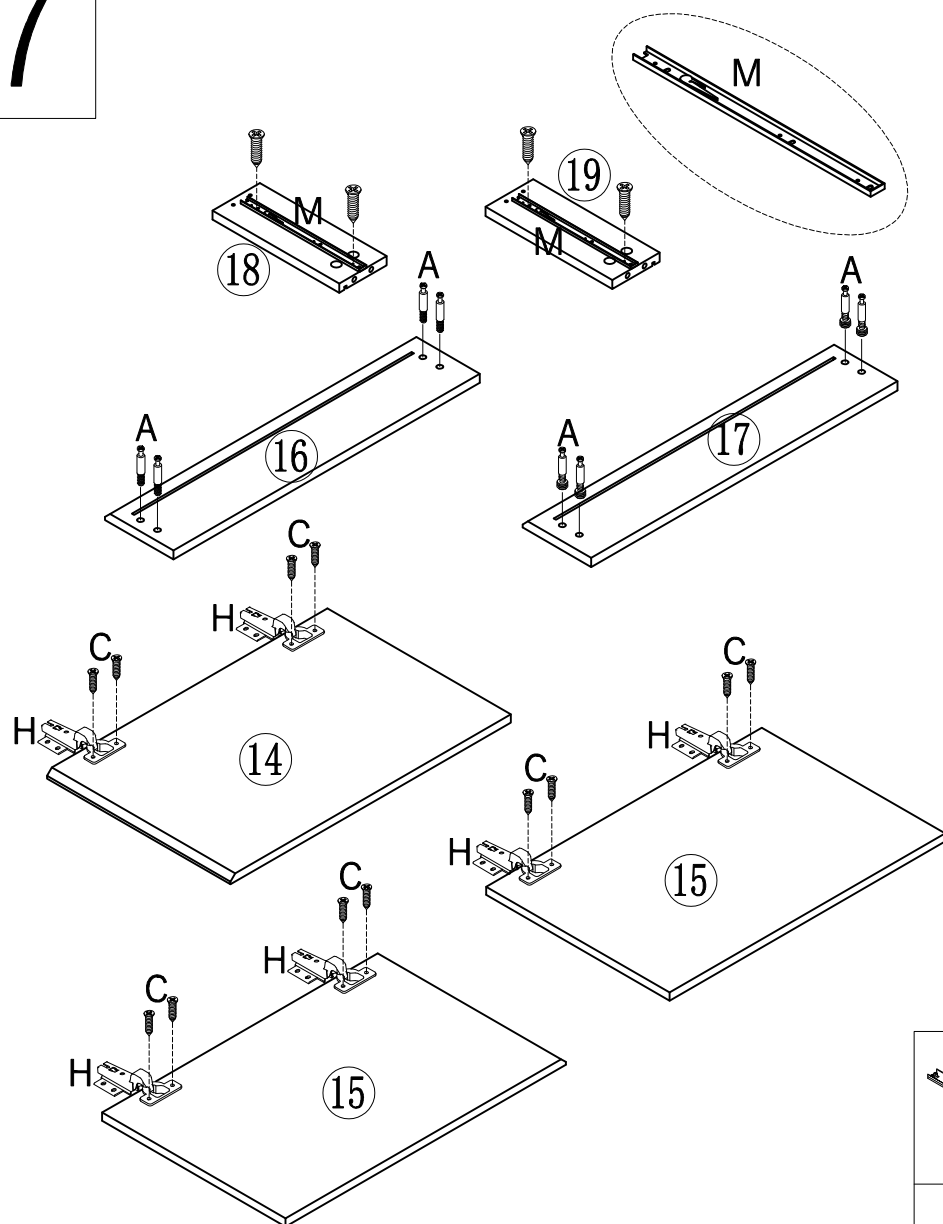


				
D	K	F	G	C

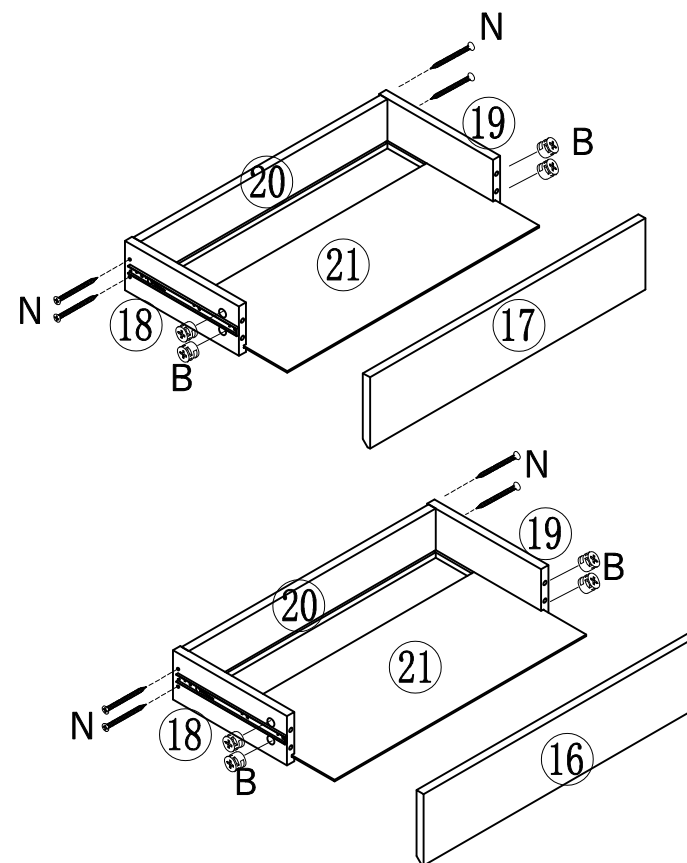
M4x14

# Assemble instructions- Spare parts

7



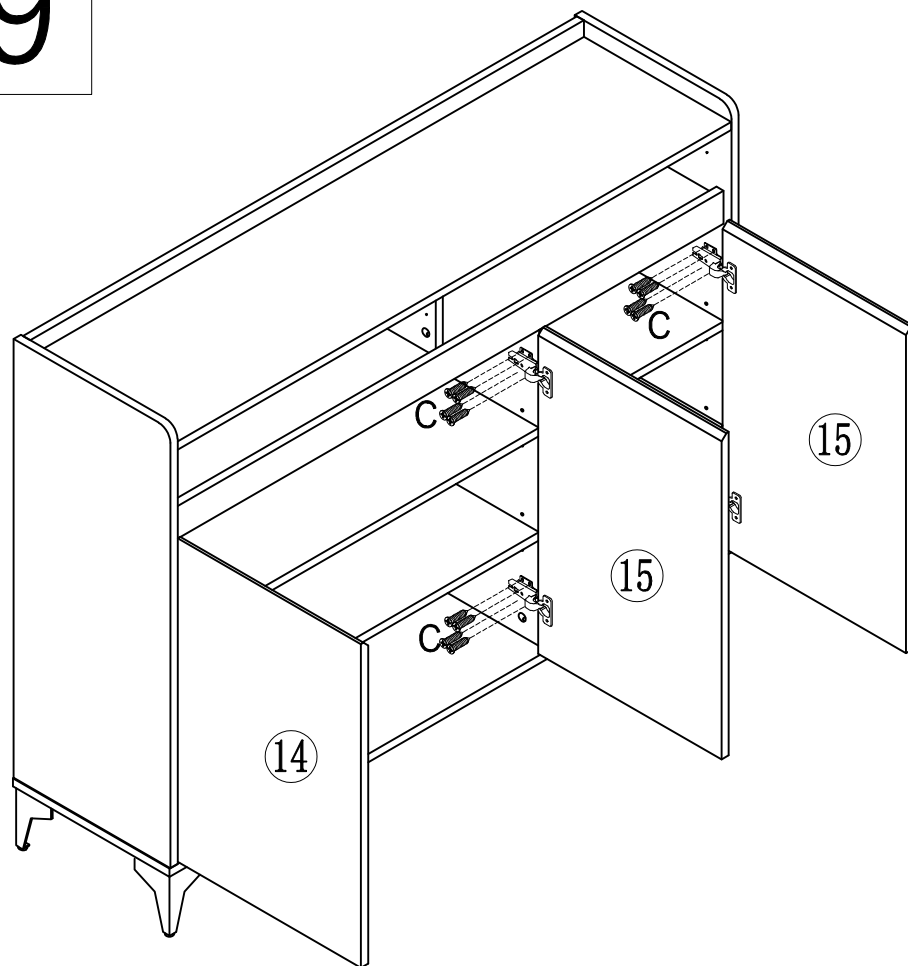
8



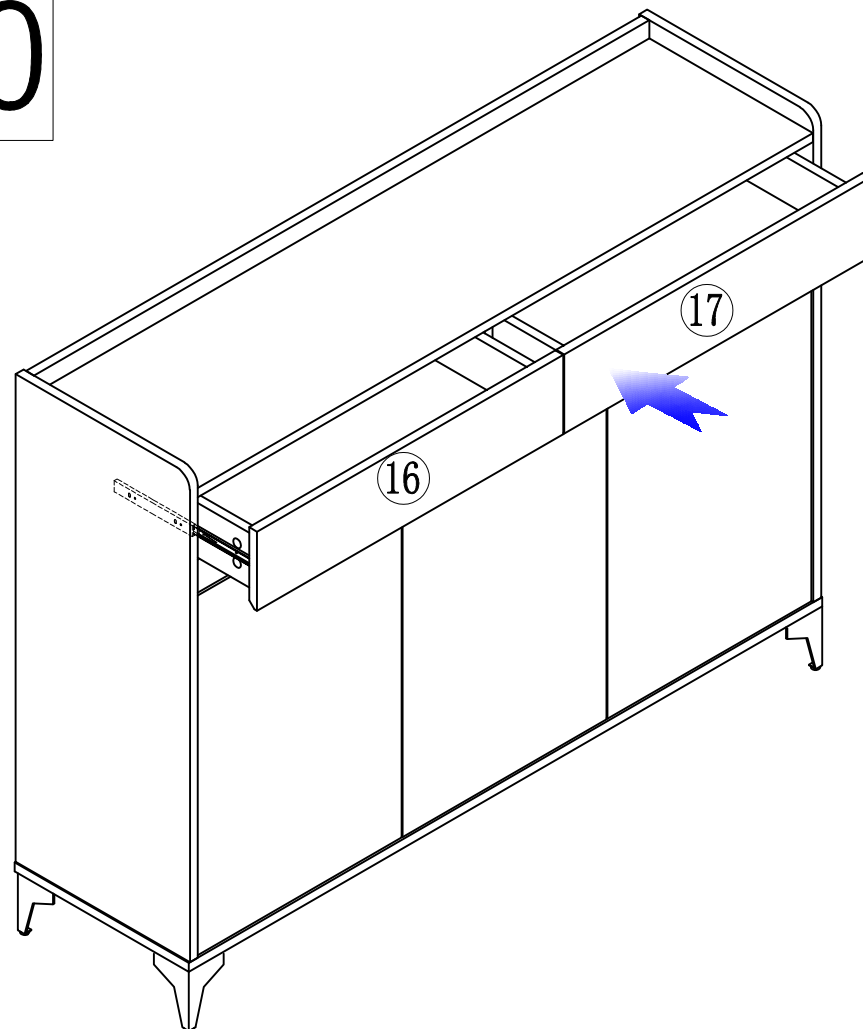
M	N	B	A	H	C

# Assemble instructions- Spare parts

9



10



M4x14

C

# Finish